

# Warm Up

Answer the following questions based on the map of Japanese expansion (p. 813):

- a. Which country controlled Libya?
- b. What is the capital city of Czechoslovakia?
- c. Which body of water lies between Germany and Sweden?
- d. Which occupied territory lies between Germany and France?

# Essential Question

- How did World War II impact global relationships?

# The Course of World War II



# Hitler's War

- Used blitzkrieg or “lightning” warfare
- Airplanes supported divisions of tanks (called panzers)



# Quote, Hitler

“I do not want to be anything other than the first soldier of the German Reich. I have once more put on the uniform which was once most holy and precious to me. I shall only take it off after victory or I shall not live to see the end . . . Just as I myself am ready to risk my life any time for my people and for Germany, so I demand the same of everyone else. But anyone who thinks that he can oppose this national commandment . . . will die! Traitors can expect death.”

# Denmark and Norway

■ Attacked on April 9, 1940 with another blitzkrieg

■ German victory



# Invasion of France

- Germany attacked Belgium, the Netherlands, and Luxembourg
- Entered France through the Ardennes Forest



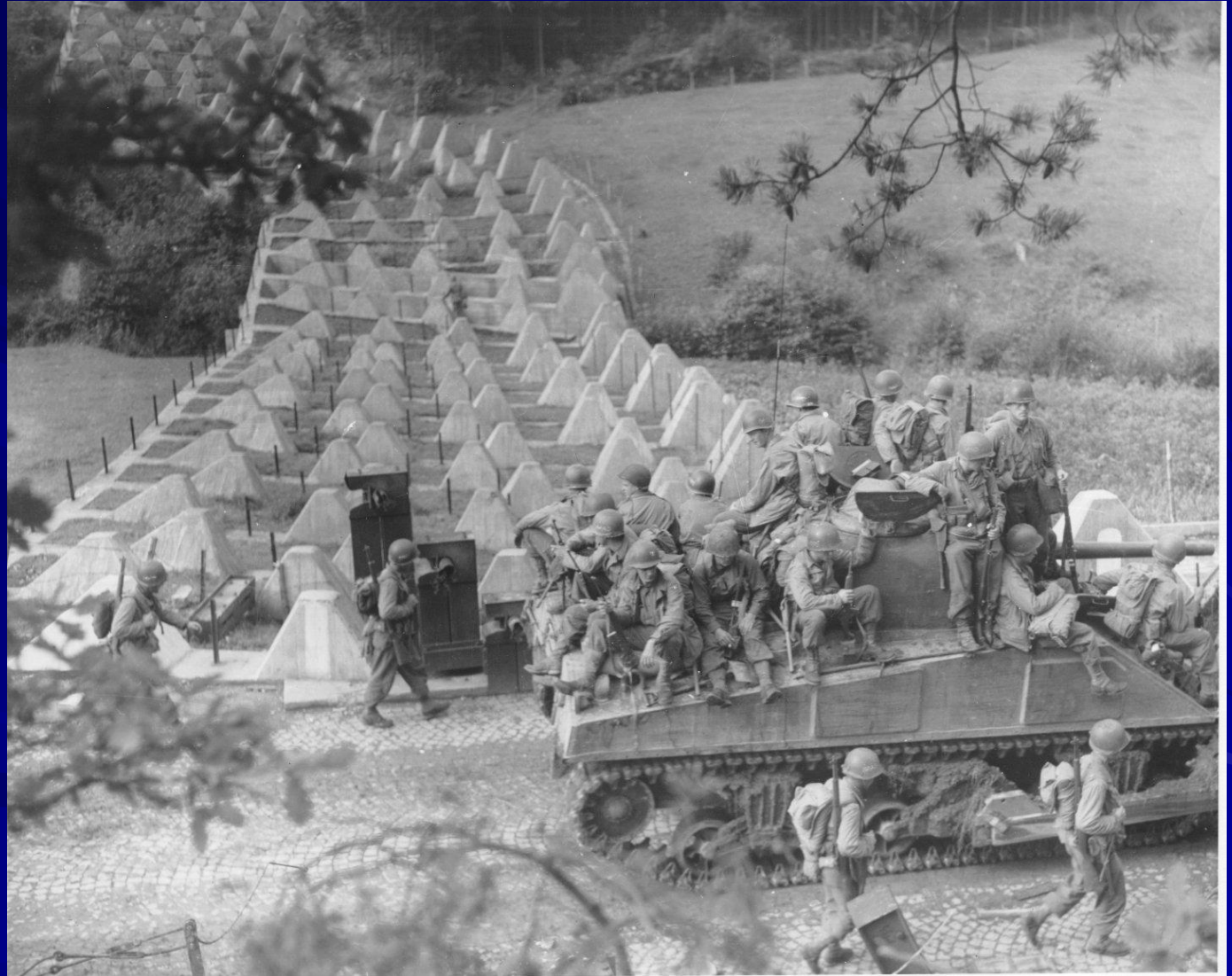
# Invasion of France



- France had prepared the Maginot Line against German invasion
- Line of concrete and steel fortifications

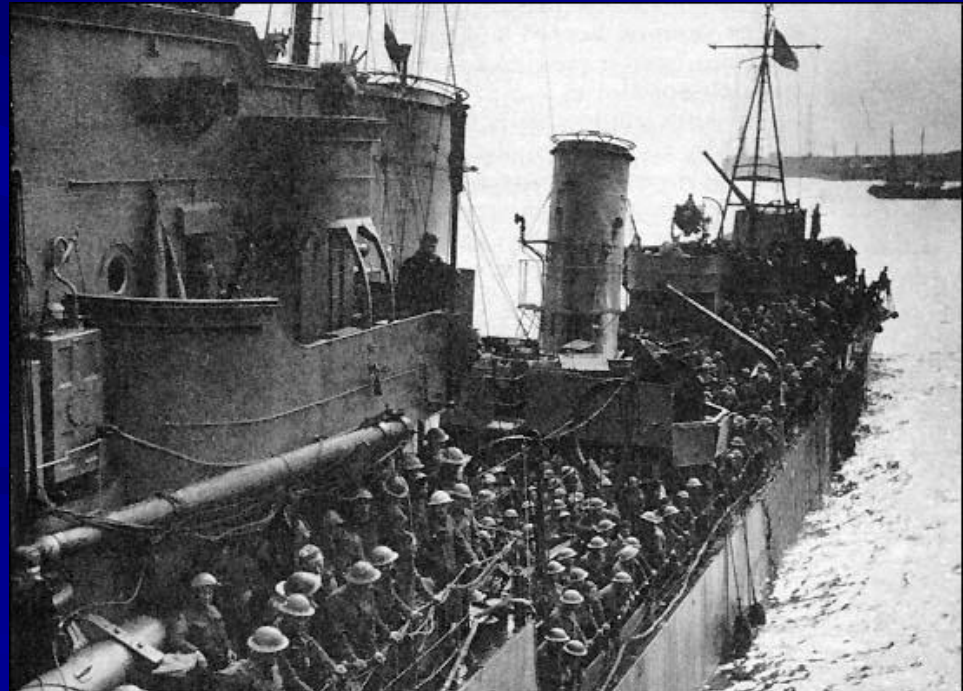


# Maginot Line



# Invasion of France

- German troops trapped the British and French troops on the beaches of Dunkirk
- Ships evacuated the British troops





# French Surrender



- June 22, 1940
- Germany controlled France, set up own government

# The United States

- Followed a policy of isolationism
- Tried to stay neutral, not be involved in European wars



# Battle of Britain

- Began in August 1940
- German air force (Luftwaffe) bombed Great Britain
- Also attacked major cities, such as London



# Battle of Britain









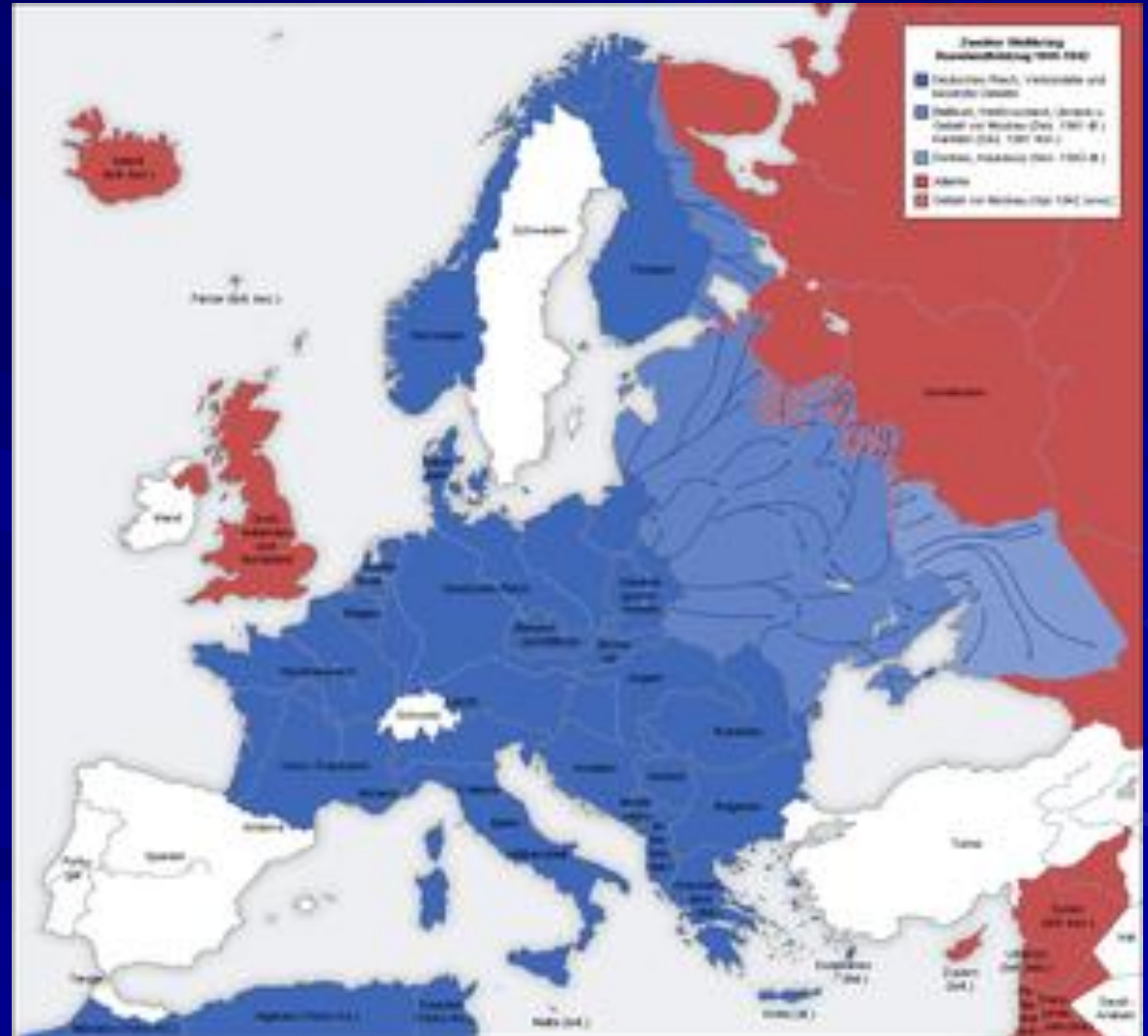
# British Advantage

- Invention of radar
- Allowed British Royal Air Force to shoot down German planes

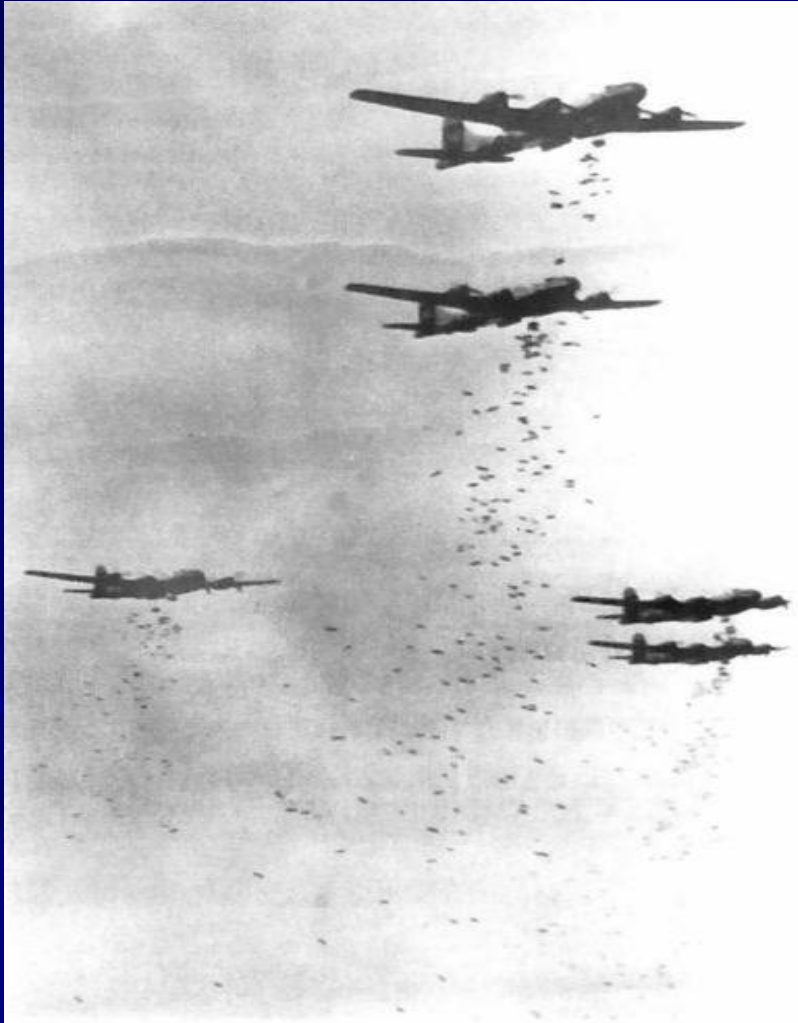


# Other Areas Controlled by Hitler

- Hungary
- Romania
- Bulgaria
- Greece
- Yugoslavia



# Germany Invades the USSR



- June 1941
- Captured 2 million Russian soldiers

# Germany Invades the USSR

- Troops came within 25 miles of Moscow
- Attacked Leningrad and Stalingrad
- An early winter forced Germans to halt



# Pearl Harbor



- Japanese attacked on Dec. 7, 1941
- Also attacked the Philippines
- By spring 1942, controlled southeast Asia and the western Pacific

# Pearl Harbor



# Pearl Harbor



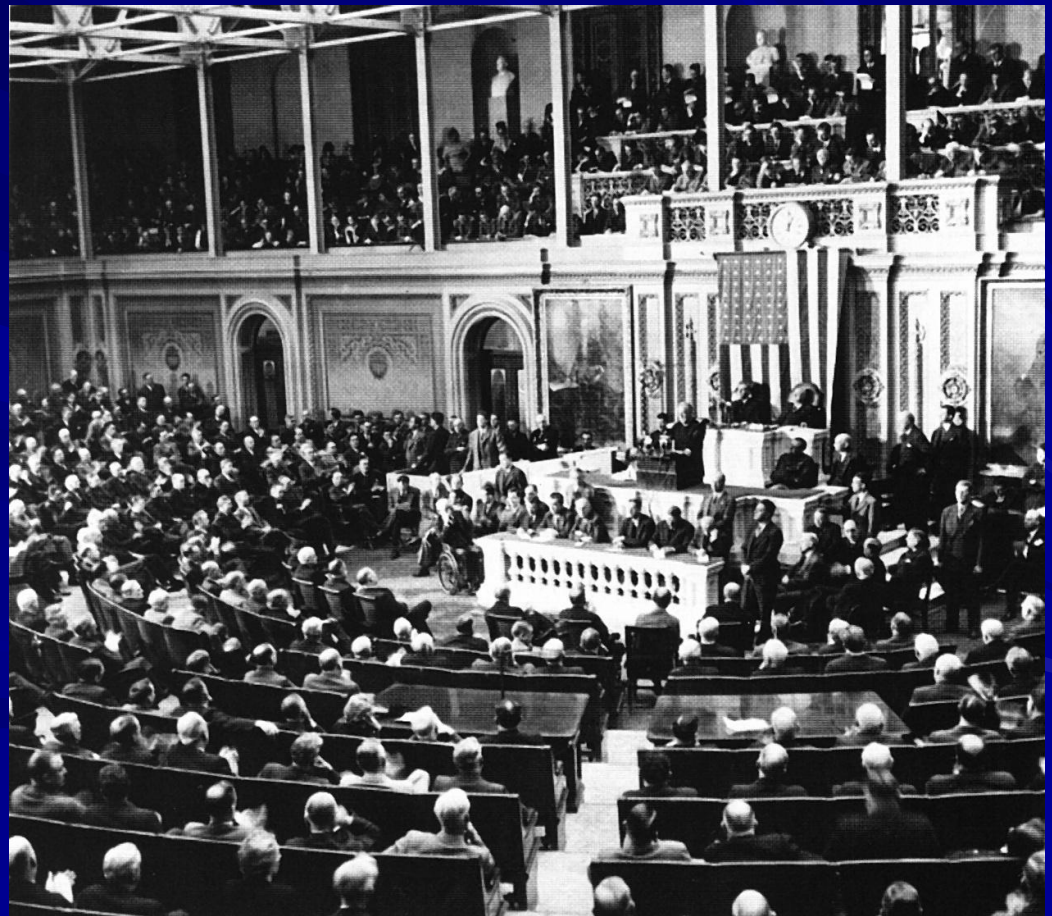


# Pearl Harbor



# U.S. Enters the War

- Roosevelt declared war on Japan
- Germany declared war on the U.S.



# The Allies



- Great Britain, the U.S., Soviet Union
- Agreed to overlook political differences

# Grand Alliance

- Agreed to fight until Germany, Italy, and Japan surrendered unconditionally

